



UNIVERSITY OF LEEDS

CANDIDATE BRIEF

Clinical Teaching Fellow in Paediatric Dentistry (without Honorary Consultant Status), Faculty of Medicine and Health



Salary: Clinical Lecturer Salary Scale (Without Honorary Consultant Status), £33,221 – £61,801 p.a. pro rata depending upon qualifications and relevant experience

Reference: MHDEN1166

Closing date: 13 December 2019

Interview date: TBC

Fixed term for two years, 20% FTE (two posts available)

Clinical Teaching Fellow in Paediatric Dentistry (Without Honorary Consultant Status)

School of Dentistry

Would you like to have a key role in inspiring our students to develop to their full potential through provision of best educational experience and clinical teaching? Are you an enthusiastic clinician with an interest in dental education?

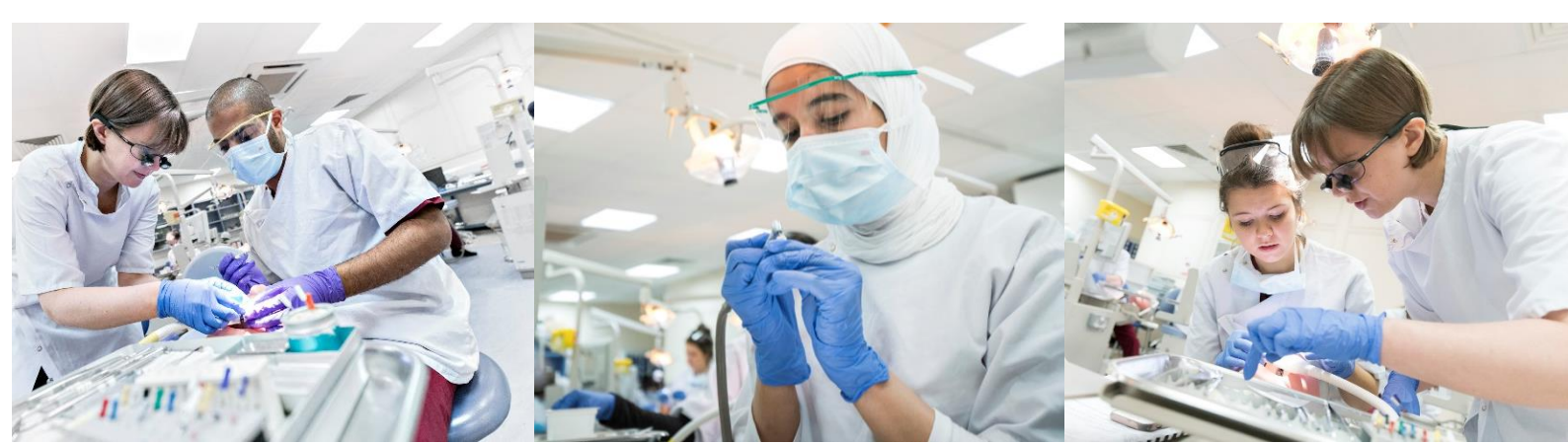
This is a unique opportunity for your development as a clinical teacher. With a dental qualification, full GDC registration and relevant foundation/general professional training or equivalent you will support students in paediatric dentistry. With a dental qualification you will contribute to teaching students in the School's undergraduate programme in paediatric dentistry.

You will participate in the maintenance and further development of excellence in the quality of education within the School of Dentistry/Leeds Dental Institute. Responsibilities will include clinical supervision of students and support for clinical audit and service evaluation projects. This post will suit enthusiastic clinicians with an interest in paediatric dentistry and dental education, and who wish to explore the potential for an academic career in paediatric dentistry. This may include dentists who are wishing to gain further experience in paediatric dentistry prior to applying for a specialist training programme.

What does the role entail?

As a Clinical Teaching Fellow in Paediatric Dentistry your main duties will include:

- Delivering paediatric dentistry teaching to undergraduate dental students within the School of Dentistry;
- Contributing to clinical supervision and teaching in the undergraduate paediatric dental clinic in Leeds Dental Institute;
- Giving pre-clinical and clinical demonstrations;
- Assisting with examinations, continuous assessments and assignments including marking (written and oral);
- Undertaking relevant training and development to maintain up to date knowledge and own continuing personal and professional development;



- Willing to be involved with the admissions process especially the Multiple Mini Interviews for all programmes within the School of Dentistry;

These duties provide a framework for the role and should not be regarded as a definitive list. Other reasonable duties may be required consistent with the grade of the post.

You will report to Professor Bernadette Drummond, Head of Department and Division of Paediatric Dentistry and Orthodontics.

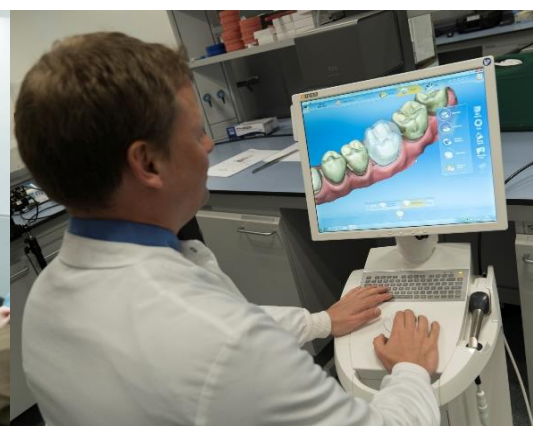
What will you bring to the role?

As a Clinical Teaching Fellow in Paediatric Dentistry you will have:

- A dental qualification (BDS, BChD or equivalent) with full registration with the General Dental Council;
- Experience of working with children in the Community Dental Service or General Dental Practice;
- Clinical experience, acumen and the ability to contribute to effective clinical and academic education in the discipline of Paediatric Dentistry in an educational setting;
- Ability to manage General Dental Practitioner type dental issues;
- Evidence of enthusiasm and commitment to the promotion of quality enhancement in dental education;
- High levels of communication and presentation skills;
- Effective interpersonal and time management skills;
- Experience of enthusing and inspiring others and working successfully as a member of a team;
- Commitment to your own personal and professional development.

You may also have:

- Innovative ideas for dental education;
- Clinical experience, acumen and ability to contribute to effective clinical and academic education;
- Teaching experience;
- Possession of a formal teaching qualification or currently undertaking training in teaching.



How to apply

You can apply for this role online; more guidance can be found on our [How to Apply](#) information page. Applications should be submitted by **23.59** (UK time) on the advertised closing date

Contact information

To explore the post further or for any queries you may have, please contact:

Professor Bernadette Drummond; b.k.drummond@leeds.ac.uk;

Additional information

Find out more about the [Faculty of Medicine and Health](#)

Find out more about the [School of Dentistry](#).

Find out more about [Athena Swan](#) in the Faculty.

Working at Leeds

Find out more about the benefits of working at the University and what it is like to live and work in the Leeds area on our [Working at Leeds](#) information page.

Candidates with disabilities

Information for candidates with disabilities, impairments or health conditions, including requesting alternative formats, can be found on our [Accessibility](#) information page or by getting in touch with us at disclosure@leeds.ac.uk.

Criminal record information

Rehabilitation of Offenders Act 1974 (Exceptions) Order 1975

This post requires an enhanced and barred list criminal record check from the Disclosure and Barring Service (DBS), and any equivalent overseas authorities where relevant. The successful candidate will be required to give consent for the University to check their criminal record status. All applicants are required to make a self-declaration where applicable.



Any offer of appointment will be subject to the University being satisfied with the outcome of these checks, in accordance with our Criminal Records policy. You can find out more about required checks and declarations in our Criminal Records information page.

